

**NEW!**

# iPod<sup>®</sup> and iPhone<sup>™</sup> holders

**NEW!**



**Model 705**

## **Mini-PortaGrip™**

- *The perfect holder for today's smaller electronics* including iPod<sup>®</sup>, iPod<sup>®</sup> nano and iPhone<sup>™</sup> mobile digital devices, cell phones, MP3 players, and handheld GPS units
- Closed, the sure-grip jaws are only 1.3" wide
- Fully open, the jaws are 2.4" wide
- Easy-to-use: squeeze the jaws closed for a secure fit; open them with the quick-release button
- Jaws are 1" tall and covered in soft rubber – won't scratch the electronics
- AMPS-compatible mounting: easily installs to any AMPS-style mount
- *Perfect for the Model 809-AMP (see below) or InDash™ custom dash mounts*
- Built-in Tipper™ tilts 30° in all directions; rotates 360°



**Model 809-AMP**

## **Window Suction Mount**

- Powerful suction pad attaches to any smooth, flat, non-porous surface including windshields and side windows
- *AMP-compatible mounting: a perfect combo with Model 705 (see above)*
- Easily move electronics from vehicle-to-vehicle or remove for security
- Full range of motion at the head plate (knob adjustment):  
210° Tilt, 360° Turn & 360° Rotation
- Ratcheted arm has 140° motion; knob locks arm into place
- Suction pad is 3.4" in diameter and features a quick release tab
- Recommended for electronics weighing up to 3.0 pounds (1.4kg)
- Overall length is approximately 5.25"

iPod is a registered trademark of Apple, Inc. iPhone is a trademark of Apple, Inc.  
Text and images © 2008 by PanaVise Products, Inc. Used with permission.

**Order today!**  
**1-800-375-0127**

Skype Technologies • Mississauga, Ontario • L4Z1G9 • Tel: 905-281-1227  
www.skype-tech.com • E-mail: skyetech@rogers.com

**Skype** 100% Canadian  
Technologies

**NEW!**

**NEW!**

# iPod® and iPhone™ holders

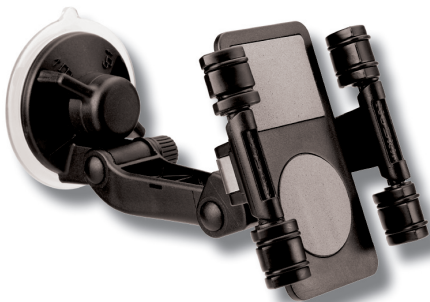


**Model 705**

## **Mini-PortaGrip™**

- *The perfect holder for today's smaller electronics* including iPod®, iPod® nano and iPhone™ mobile digital devices, cell phones, MP3 players, and handheld GPS units
- Closed, the sure-grip jaws are only 1.3 inches wide
- Fully open, the jaws are 2.4 inches wide
- Easy-to-use: squeeze the jaws closed for a secure fit; open them with the quick-release button
- Jaws are 1" tall and covered in soft rubber – won't scratch the electronics
- AMPS-compatible mounting: easily installs to any AMPS-style mount
- *Perfect for InDash™ by PanaVise custom dash mounts*
- Built-in Tipper™ tilts 30° in all directions; rotates 360°

## **iPod® Holder with Suction Mount**



**Model 706-811**  
(Patent Pending)

- *The perfect mounting solution for standard iPod® mobile digital devices!*
- Simply rotate the arms to adjust the spacing for iPods with "skin," "no skin" or "hardcase."
- Spring-loaded arms gently, yet securely, hold a variety of iPod units including the classic, touch, video, clickwheel and original
- Neoprene rubber pads help cushion the electronics
- *Includes the PanaVise model 811 Suction Cup Mount!*
- The 811 Suction Cup Mount has an easy-rotation feature for attaching to windows or windshields
- The 811 also includes a tape disc for optional dash board mounting



iPod is a registered trademark of Apple, Inc. iPhone is a trademark of Apple, Inc.  
Text and images © 2008 by PanaVise Products, Inc. Used with permission.

**Order today!**  
**1-800-375-0127**

Skye Technologies • Mississauga, Ontario • L4Z1G9 • Tel: 905-281-1227  
www.skye-tech.com • E-mail: skyetech@rogers.com

**Skye** 100% Canadian  
Technologies

# INDASH by PANAVISE®

767-GR2

Page 1 of 1

**MOUNTING LOCATION:**  
On any AMPS Compatible Device

**TOOLS REQUIRED:**

5/16" Wrench

**HARDWARE INCLUDED:**

(4) O-#8/32 Acorn Nut

**GARMIN- GPS ADAPTER  
TO AMPS COMPATIBLE INDASH MOUNT**

**PART#: 767-GR2**

**MFG: Garmin**

**MODELS & YEARS:**

**C-300, 310, 320, 340, 510, 530, 550, 580.**

**NUVI - 300 & 600 Series All**

**ZUMO- (450&550) All**

**\*\* ADVISEMENT \*\***

Read instructions completely prior to starting installation. All InDash Mounts are designed so that after installation, phone is facing normal driver position for left-hand drive vehicles. This mount is not designed to be used in foreign countries with right-hand drive vehicles. Use extreme care when working around the plastic components on the dash. Excess force, can cause breakage of the plastic components.

**STEP#1:** In place of installing the Window Mount ball into the mounting socket. Install the InDash Adapter 767-GR2.

**STEP#2** Place Adapter onto the InDash Mount (or AMPS compatible device) and install the (4) Acorn nuts with the 5/16" wrench.

**STEP#3:** The new assembly can be mounted directly to an InDash mount, or any AMPS compatible device.

INSTALLATION IS NOW COMPLETE. ENJOY YOUR NEW INDASH by PANAVISE ADAPTER.



NUVI Mounting Socket



NUVI Installed on Hummer H3  
InDash Mount



Adapter Installed on ZUMO



ZUMO Adapter showing  
Window Mount Ball



02-08-07

There may be recent updates to this Instruction Sheet, please visit our website or contact PanaVise Products, Inc. for the latest revision as well as for the most complete up-to-date PanaVise *InDash Applications List*: 7540 Colbert Dr., Reno, NV, Phone: 800.759.7535, 775.850.2900, Fax: 800.395.8002, www.panavise.com. © 2002 PanaVise Products, Inc.

# INDASH by PANAVISE®

**I-767-TT2**

Page 1 of 1

**MOUNTING LOCATION:**

InDash Mount and AMPS  
Compatible Mounts

**TOOLS REQUIRED:**

T-7 Torx Bit

**HARDWARE INCLUDED:**

(4) O- #8-32 Acorn Nuts

**TOMTOM WINDOW MOUNT ADAPTER  
TO INDASH BY PANAVISE MOUNTS & ANY  
AMPS COMPATIBLE DEVICE**

**PART#: 767-TT2**

**MFG: TomTom**

**MODELS & YEARS:**

**One US/Canada, One 3rd Edition,  
One XL**

**\*\* ADVISEMENT \*\***

Read instructions completely prior to starting installation. All InDash Mounts are designed so that after installation, phone is facing normal driver position for left-hand drive vehicles. This mount is not designed to be used in foreign countries with right-hand drive vehicles. Use extreme care when working around the plastic components on the dash. Excess force, can cause breakage of the plastic components.

**STEP #1:** Extraction of the ball from the window suction mount and cover is required. With the T-7 torx bit, remove the (2) screws from behind the window mount. Release the cover and pull the mounting base from the window suction cup.

**STEP #2:** Carefully pull off the cover plate from the Ball on the suction cup.

**STEP #3:** Install the Panavise 767-TT2 Adapter by inserting the ball straight \*into the removed cover. *\*NOTE: Be sure to insert the ball straight into the cover, DO NOT tilt the ball as it may crack the cover.*

INSTALLATION IS NOW COMPLETE. ENJOY YOUR NEW INDASH by PANAVISE MOUNT.



TomTom Mounting Base installed with Cover onto 767-TT2



02-11-08